



CENTRIFUGAL BLOWERS

AEP P/N	TYPE	CFM @ 0" SP	RPM	V	Hz	PH	I	LENGTH		WIDTH		HEIGHT	
								In	mm	In	mm	In	mm
C4B1H-1C	Single	10	7580	115	400	1	0.1	3.69	94	4.62	117	2.75	70
C25K7K-1CC	Single	35	8500	115	400	1	1.0	4.36	111	5.12	130	5.41	137
C25S1Q-1	Duplex	50	11900	115	400	1	0.7	5.27	67	2.65	67	2.73	69
C4R2J-2C	Single	55	11500	115	400	1	0.3	4.50	114	4.32	110	2.22	56
C5N3J-1CC	Single	65	4800	208	400	3	0.3	5.00	127	3.65	93	3.81	97
C7W806Q-1CC	Single	95	3150	208	60	3	0.5	10.38	264	10.31	262	2.00	51
C7U76Q-6C	Single	110	3450	115	60	1	1.3	7.25	184	15.88	403	10.00	254
C7U5J-1C	Single	140	6600	208	400	3	1.0	6.00	152	5.00	127	5.10	130
C7P9Q-2	Duplex	145	3200	230	60	1	0.7	9.88	251	6.00	152	5.65	144
C7V181Q-1CC	Inverted	155	3400	115	60	1	1.2	5.75	146	7.42	188	7.05	179
C7Z178G-1C	Single	250	5800	200	400	3	3.0	8.62	219	9.65	245	1.84	47
C13Z16Q-1C	Single	340	3450	115	60	1	4.5	15.00	381	8.34	212	8.25	210
C6Z15K-1CC	Single	360	23450	200	400	3	5.5	7.66	195	6.35	161	2.24	57
C7Z15G-4C	Single	415	5900	250	400	3	3.2	7.82	199	8.72	221	3.08	78
C11W20S-1C	Single	450	3500	208	400	3	2.8	8.98	228	9.84	250	4.18	106
C7Z15G-1CC	Single	485	5500	200	400	3	4.4	8.92	227	7.79	198	8.68	220
C11Z31Q-2C	Single	520	3150	208	60	3	2.7	10.27	261	10.66	271	4.0	102
C11Z15G-1	Duplex	550	3300	115	60	1	2.5	11.50	292	8.75	222	7.50	191
C18Z56F-1C	Single	550	3800	208	400	3	3.8	10.81	275	9.13	232	9.44	240
C18Z23F-1C	Single	680	3600	200	400	3	4.5	12.00	305	9.25	235	10.00	254
C18Z23F-2CC	Single	700	3780	416	400	3	2.6	12.62	321	9.20	234	9.80	249
C13Z198Q-1CC	Single	800	3400	230	60	3	5.0	16.70	424	15.35	390	13.98	355
C13Z111Q-1CC	Single	850	3450	460	60	3	2.9	15.25	387	13.00	330	13.75	349
C18Z24Q-5C	Single	1000	5700	416	400	3	6.2	10.84	275	11.78	299	3.34	85
C13Z37P-1C	Single	1200	1725	460	60	3	1.1	17.00	432	12.25	311	13.00	330
C13Z12Q-1CC	Single	1450	3450	230	60	3	8.0	19.50	495	18.10	460	17.75	451
C18Z24Q-1	Duplex	1600	3220	220	60	3	4.5	10.84	275	11.78	299	3.84	98
C13Z88Q-1CC	Single	1770	3500	208	60	3	8.2	14.50	368	17.53	445	16.62	422
C18Z166Q-1	Duplex	2700	3100	208	60	3	10.0	13.27	337	14.65	372	5.56	141
C13Z171Q-1C	Single	4050	3450	460	60	3	9.8	19.00	483	22.00	559	21.00	533
C13Z199Q-1	Duplex	4600	3535	230	60	3	22.0	13.8	351	19.10	485	33.30	846

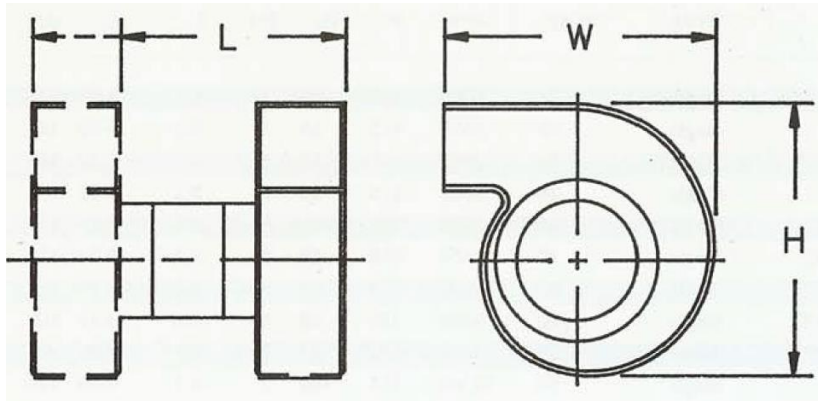
Features vary with applications and customer requirements and include:

- High pressure applications
- Choice of air blast direction
- Single, multi or variable speed
- Optional mounting configurations
- Motors designed to meet specific blower power requirements

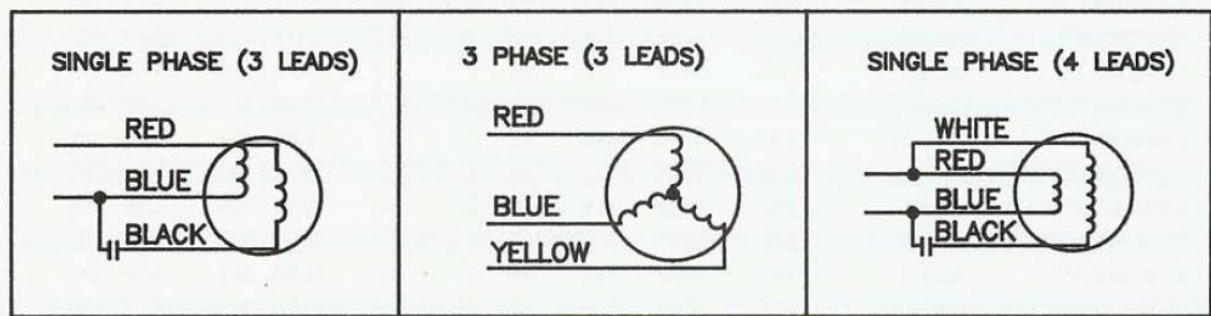




CENTRIFUGAL BLOWERS



STANDARD CONNECTION DIAGRAMS



Other **ASHLAND** Products Include:

- Centrifugal Blowers
- Radial Blade Blowers
- Multi Stage Blowers
- Crossflow Blowers
- Tangential Blowers
- Tubeaxial Fans
- Propeller Fans
- Axial Fans
- Torque Motors
- Induction Motors
- DC to AC inverters
- Stator & Rotor Sets
- Synchronous Motors
- Contract Machining

For information on these products or assistance with your specific application, contact the factory or your **ASHLAND** representative.

-- **Ashland Electric Products, Inc.** is a Small Veteran Owned Company --